

Inventory Manager 200

Integrates Into Sage 200



Bar Coding Solutions For Sage Software

sage

Developer

Inventory Manager 200

Integrates Into Sage 200



Inventory Manager 200 Overview

Datalinx *Inventory Manager 200* utilises the latest in automatic identification technology to bring mobility to staff within the stores area of a business. This enables stores personnel to carry out daily tasks efficiently. The use of bar code based, wireless hand held terminals, keeps the rest of the business in touch with the order processing status and inventory position.

Datalinx *Inventory Manager 200* has been designed from conception to work in harmony with Sage 200. Datalinx are recognised as the specialist Sage Developer for bar code solutions that integrate with the Sage business systems; Sage 50, Sage MMS, Sage 200, Sage Line 500 and Sage 1000.

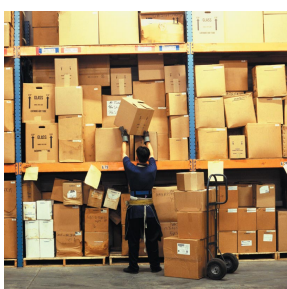
Inventory Manager 200 is the latest addition to the Datalinx solutions range, supplying all the services and facilities that would be expected of a bar code enabled warehousing system, directly integrated into the Sage 200 stock control and accounts system.

Inventory Manager 200 has been developed based on knowledge gained over more than a decade of implementing Datalinx *Warehouse Manager* for Sage 500.

Inventory Manager 200 has been tailored specifically for the requirements of the mid market business, it delivers functions that are essential to providing high accuracy stock levels, which enable all areas of the business to make informed decisions based on reliable stock data within Sage 200.

Inventory Manager 200 will significantly improve the ability of the user to deliver greater customer service through more accurate stock movement information, which allows better informed purchasing and more reliable delivery promises.

Inventory Manager 200 has been designed, developed and produced by the Datalinx in-house team of Sage developers, with the brief to make the look and feel the same as Sage 200. When the application is installed a new icon appears within the tool bar in the same way as any other Sage module. Once installed *Inventory Manager 200*'s capabilities for receipting, put away, sales order picking and stocktaking become fast and efficient.



Inventory Manager 200 is purchased with all of the necessary software and hardware to enable a complete working application within the stores area. As well as the software, the *Inventory Manager 200* package contains the hardware and associated tools to install an enterprise standard wireless network to cover a typical 500m² (5400ft²) stores area. The package also contains two bar code enabled hand held terminals and a high speed 100mm (4in) label printer. Where the business operating environment is larger than average, additional wireless network coverage can be achieved by simply adding further low cost access ports. Additional hand helds can be added as required, since there is no practical limit to the number of devices that *Inventory Manager 200* can support.

Inventory Manager 200 Operations

A large percentage of operations conducted by stores staff need to be carried out whilst mobile, within the stores area. Therefore, if the workforce is to perform efficiently, the application needs to be as mobile as the personnel that utilise it. *Inventory Manager 200* puts the power of Sage 200 into the hands of mobile workers.

Whilst the bar code based hand held terminals are mobile, the implementation of the wireless network also means they are on-line and communicating in real-time with *Inventory Manager 200* and, therefore, with Sage 200. This means that as activities are carried out on the hand held, the details of the transactions are instantly updated to Sage 200. There is no need to wait for the unit to be docked for download and there is no risk of data loss. All of the issues around late information and synchronisation, often associated with batch terminals, are eliminated. The management and reporting screens within *Inventory Manager 200* have the look and feel of Sage 200. The hand held screens, as you would expect from a modern dynamic application, utilise the latest Microsoft operating system and screens are presented with the familiar look and feel of any other Microsoft device or application.

Product Receipting

When a shipment arrives at a goods inwards bay the stores staff will usually, as a minimum, receive the supplier's name or the purchase order number for the goods. On the hand held terminal the operator will select the product receipting option; and this will prompt personnel to enter either the supplier name or the purchase order number. The integration of *Inventory Manager 200* with Sage 200 enables the information entered into the hand held to be instantly validated.

Inventory Manager 200

Integrates Into Sage 200



When entering the purchase order number, the hand held will display the purchase order header information. In the case of entering the supplier name, the hand held will display all purchase orders outstanding for that supplier, allowing selection of the correct purchase order. Once the appropriate purchase order has been selected, the hand held prompts for the product code to be entered. This may be keyed, selected from a menu or scanned, from the relevant bar code.

On entering the product code, the hand held checks the purchase order detail on Sage 200 and confirms that the product is on the purchase order. Provided the purchase order details are correct and there is an outstanding quantity for the selected product, then the hand held displays the expected quantity. The stores operator will then be prompted to enter the quantity of product received.

Having made these entries, *Inventory Manager 200* requests that the operator keys, selects from a menu or scans a bar code the location where the product is to be stored. The purchase order receipt transaction is then automatically completed in Sage 200. This location is recorded in both *Inventory Manager 200* and Sage 200. The hand held then prompts the operator for another purchase order receipt or they may be return to the main menu.

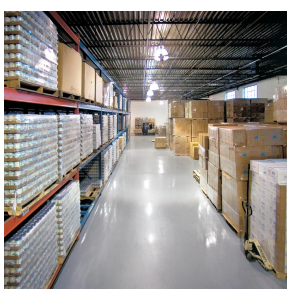
Stocktaking

If stock control and inventory management systems are accurate, then it is possible to reduce the frequency of stocktakes or to move to perpetual stocktaking. *Inventory Manager 200* is more than capable of providing this high level of accuracy and enables stocktakes to be conducted quickly and efficiently.

In addition, the stocktake function facilitates the accurate recording of the locations and quantities of Batches and Serial numbered goods, ensuring traceability.

After selecting the 'Stocktake' option on the hand held, the operator scans the location bar code, scans the product bar code and then manually keys in the actual quantity counted.

A summary of the stocktake information from all the hand helds on the system is available on the *Inventory Manager 200* management and reporting screens. This allows for review of the count and enables management adjustment of quantities prior to posting any stock adjustments to the Sage 200 stock tables.



Sales Order Picking

In most organisations the picking and dispatching of product is the most critical and important function of the stores area. Mis-pickings and late pickings damage both the business and customer relationships.

To perform a sales order pick using *Inventory Manager 200*, the appropriate menu item is selected on the hand held. This will display the outstanding sales orders in delivery date sequence and allow the stores operative to review the order detail and select the next order to pick. Once the sales order is selected, the hand held displays the details of the product to be picked, its location and the quantity required.

During the picking process *Inventory Manager 200* references the original order on Sage 200, instantly verifies that the correct product code has been entered into the hand held and then displays the required quantity to fulfil the order. The operator then confirms the quantity that has been picked; this can be keyed, selected from a menu or scanned from the relevant bar code into the hand held. This information is used to update the order details on Sage 200 and after one or more lines of the order have been picked, the order may be invoiced.

Label Production

Not all product received from a supplier will have bar code labelling or identification, so *Inventory Manager 200* can produce bar code labels using the bar code label printer supplied. These labels will include a bar code and all of the relevant information to enable accurate identification and stock control.

Provided within *Inventory Manager 200* are a number of standard format labels. Using a combination of *Inventory Manager 200* and Sage 200, users may also design personalised label layouts and customer specific labelling. These labels typically contain both human readable data and bar code fields. Once set up, the variable data for each label will be populated at the time of printing.

Product Cross Reference Table

In many situations, product being handled within the stores area may have bar codes already on the packaging, particularly when dealing with retail products. If this is the case then the product cross reference table within *Inventory Manager 200* can be used to create a link between the Sage 200 stock code and the supplier's bar codes, enabling the use of any existing bar code labelling already on the product. This removes the need to re-label, saving time and reducing the potential for error.

Inventory Manager 200



Integrates Into Sage 200

Hardware

Datalinx are partnered with two world class leading manufacturers for the supply of hardware for *Inventory Manager 200*, namely Symbol/Motorola Technologies and Zebra Technologies.

The wireless network is delivered by using the Symbol WS2000 series wireless switch. This extends the benefits of Symbol's award-winning, next-generation wireless architecture, designed and priced to meet the needs of small to medium sized businesses. The hand held terminals are the Symbol MC50 range, which may be upgraded to the MC70 should the business require a more advanced terminal. The label printing from *Inventory Manager 200* is provided through the Zebra S4M printer. This printer has features needed to support many applications at an affordable price.

For more in-depth details of the hardware, separate product documentation is available.

Case Study

Specialist Distribution and Logistics companies embraced warehouse management systems with real-time wireless updates some time ago. The reasons were simple; competition, logistical efficiency, cost reduction and maximum use of their extensive infrastructures. These systems also brought new standards of customer service in terms of tracking items and forecasting delivery times, enabling customers to locate their packages via the internet and enabling the delivery businesses to offer guaranteed, timed delivery services. These impressive and significant benefits are also potentially available to many other businesses in many other industries. It has been estimated that most small to medium sized businesses within the UK could significantly benefit from installing and running an integrated warehouse management system.

Inventory Manager 200 Benefits

Clearly the benefits will vary by individual company, but in general *Inventory Manager 200* can reduce 'avoidable consequential costs'. These are costs that a business incurs due to mistakes in information or process. In the case of a warehouse operation, the costs generated by inaccurate information can be considerable, rippling out to impact not only the core business, but also customers and suppliers. *Inventory Manager 200* delivers a comprehensive set of management tools for Sage 200 that will reduce the number and consequential cost of stock information errors in your business.

Although consequential costs due to inaccurate stock information can be significant, they are generally only visible through indirect operational and financial measures. For this reason, the potential savings created by accurate information are not always immediately apparent. However, a highly tangible example is the potential impact on direct picking costs; non-bar coded warehouses are typically only 75% accurate, which means that for every four transactions, one will have to be repeated. Stock accuracy using bar coding is typically up to 98%, which means that virtually every pick is successful, reducing the number of picks required as there are no repeat picks. This is a 25% increase in productivity, which can be used to either produce the same output with fewer picking hours or increase throughput with the same hours.

In addition, this single significant benefit does not take into account the positive impact that accurate data will have on reducing other avoidable consequential costs throughout the rest of the business.

If you require further information please contact Datalinx Computer Systems.

Datalinx reserve the right to amend specifications and functionality as part of our commitment to continuous improvement.

